



Developing a Disaster-Resilient Community

Matsubara



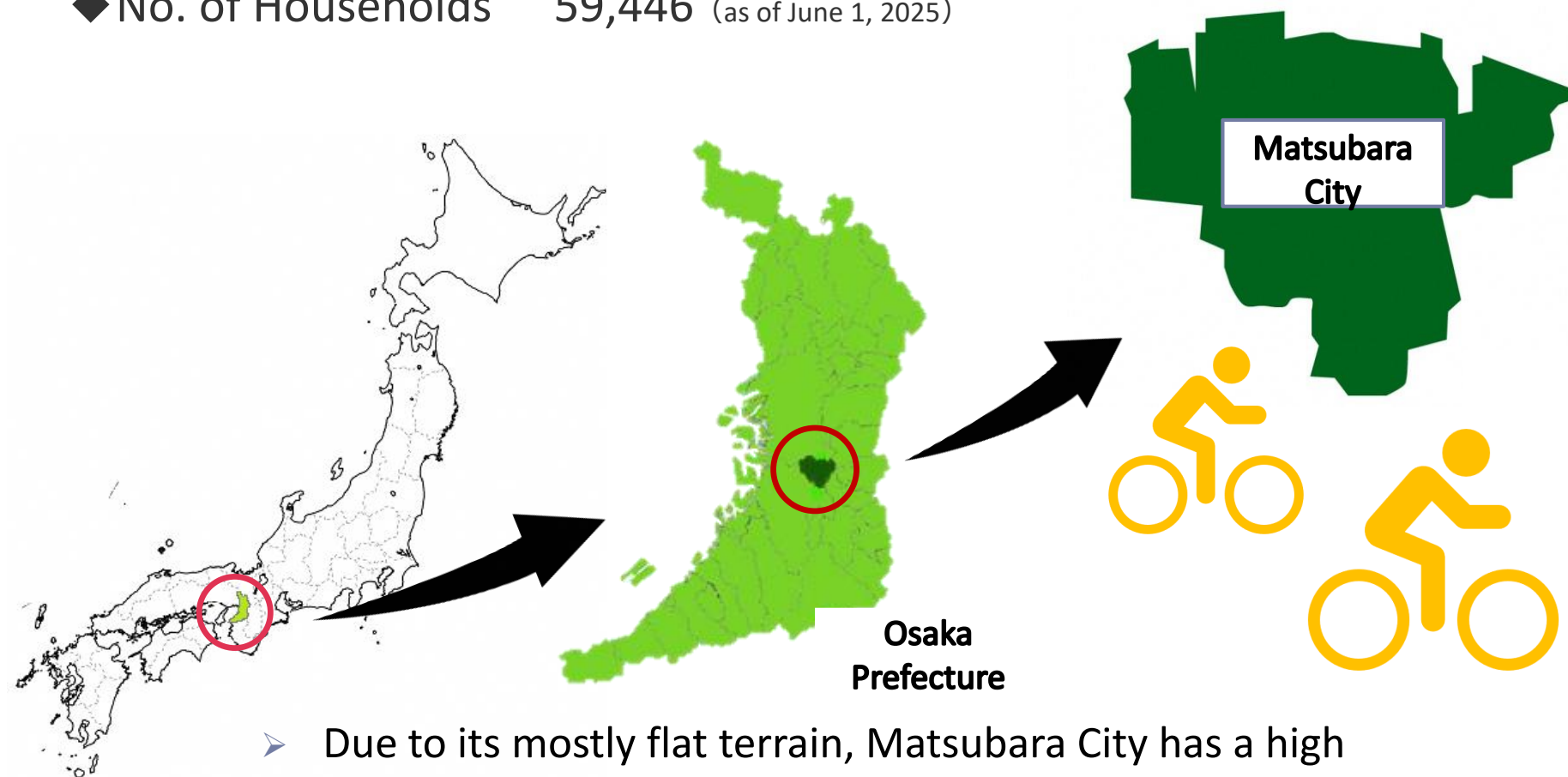
Presenter

KITANO Tomomi

Director, Division of Civic
Collaboration, Matsubara City



- ◆ Total Area 16.66km²
- ◆ Population 116,013 (as of June 1, 2025)
- ◆ No. of Households 59,446 (as of June 1, 2025)





Geographical Characteristics



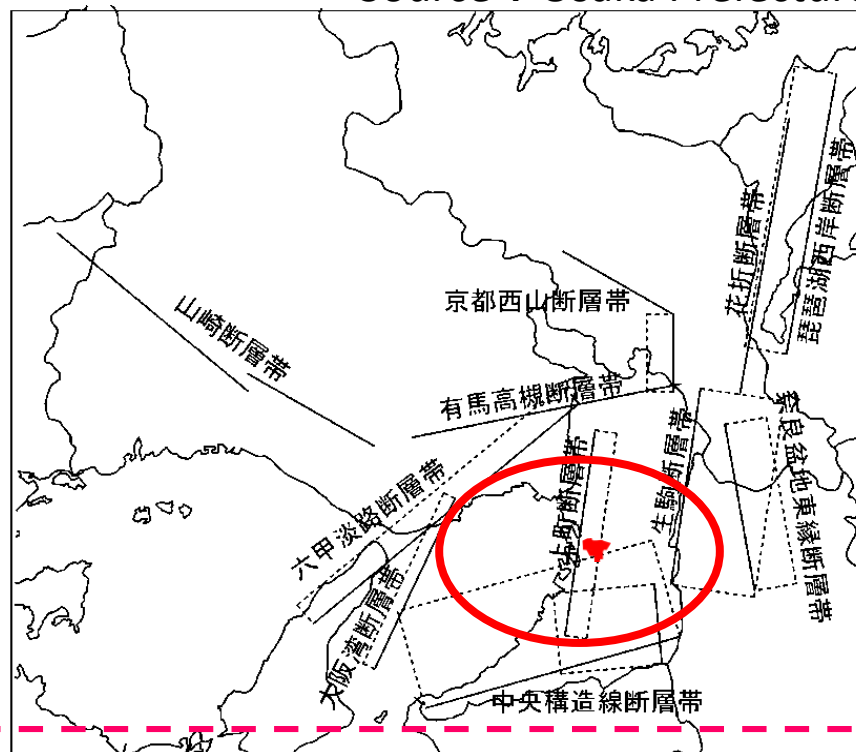
【Japan's Tectonic Setting】

Source : Japan Meteorological Agency



【Active Faults in the Kinki Region】

Source : Osaka Prefecture

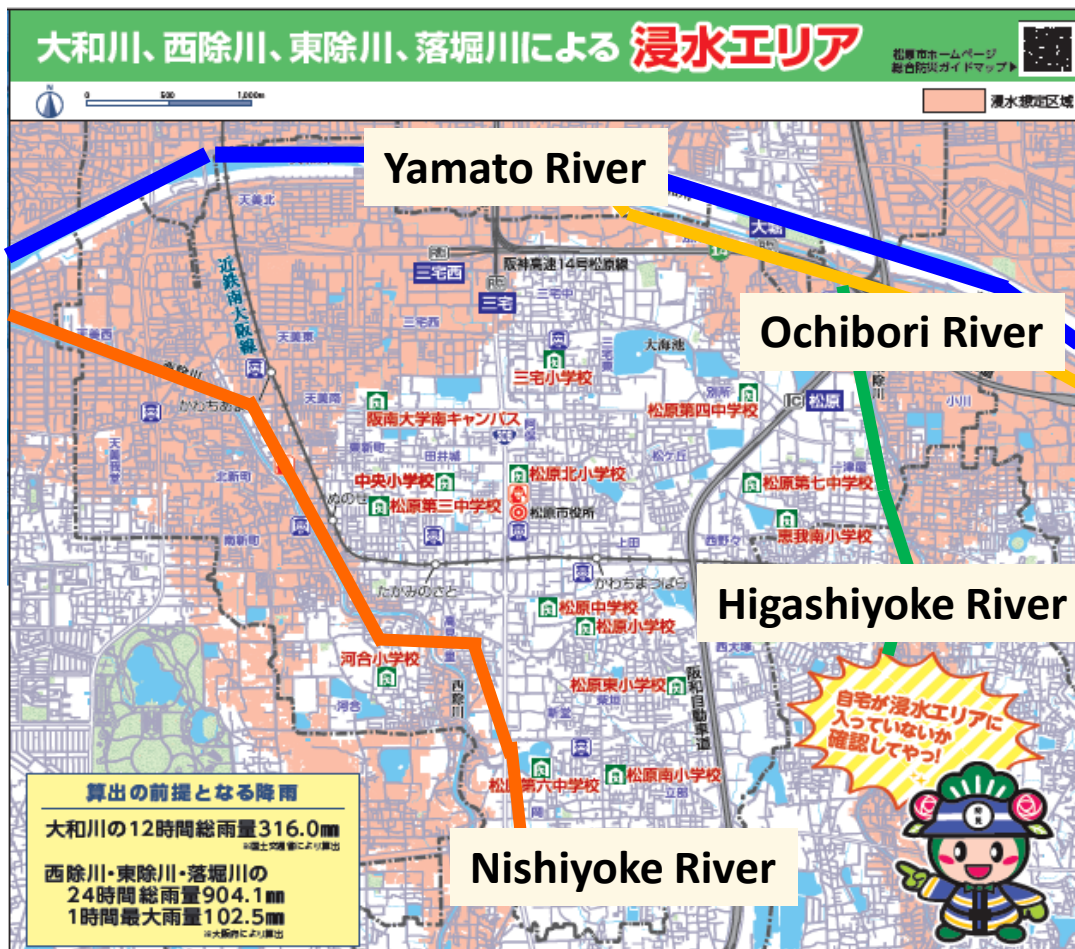


- Japan is located at the intersection of four tectonic plates.
- Matsubara City is also surrounded by several active fault lines.



【River Conditions in Matsubara City】

Source : Matsubara City



- Yamato R.
- Ochibori R.
- Nishiyoke R.
- Higasiyoke R.

- Matsubara City is compact and flat, with a total area of 16.66 km²
- In addition to the Yamato River, a river of special importance, three other rivers-- Ochibori River, Nishiyoke River, and Higashiyoke River-- flow through the city, making a total of four rivers
- While there is no risk of landslides, the city is vulnerable to flooding caused by heavy rainfall and other weather events.



松原市セーフコミュニティ Past Flood Disasters in Matsubara City



Overflow of Yamato River in 1982



In the 1982 flood disaster ("57 flood"), the city recorded a maximum hourly rainfall of

39.5mm

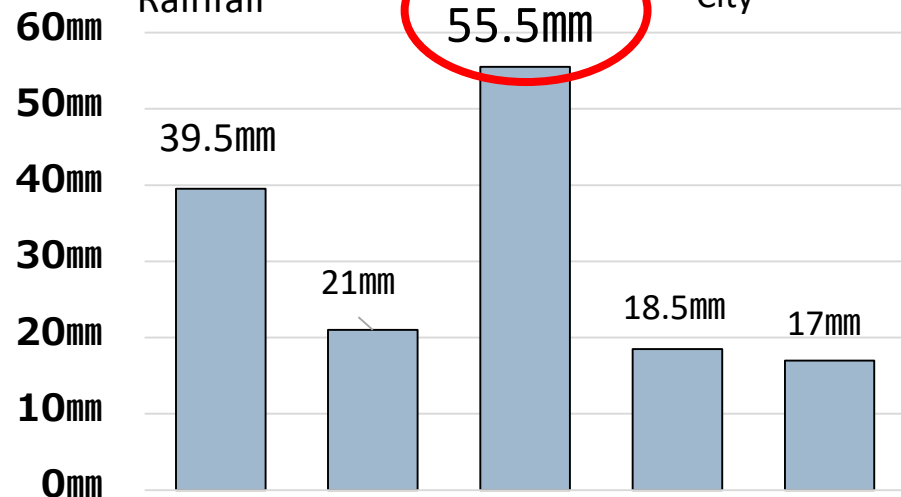


In 2020, rainfall exceeded the levels recorded in

1982

Maximum Hourly
Rainfall

Source: Matsubara
City



1982年 2019年 2020年 2021年 2022年

As a result of proactive stormwater management measures implemented over the years, No flooding occurred in 2020



☆ Guide Map Delivered to Every Household ☆



It provides information not only on flood hazard zones and evacuation shelters, but also on preparedness and response measures



- Prepare an emergency supply kit.
- Secure furniture and appliances to prevent tipping
- Identify evacuation sites and routes in advance and decide where to meet and how to communicate with family.
- Check whether homes are located in a flood hazard zone.
- Participate in local disaster evacuation drills, etc.

Promoting Awareness of the Importance of Disaster Preparedness in daily life!!



☆ Full Financial Support for Disaster Preparedness Specialist Certification ☆

- Eligible participants include citizens aged 18 to 65, as well as employees of businesses that have signed disaster response agreements with the City
- Starting from FY2024, citizens aged 12 to 17 (jr. high school) are also newly eligible.



☆ Developing a Collaborative Shelter Management Network ☆

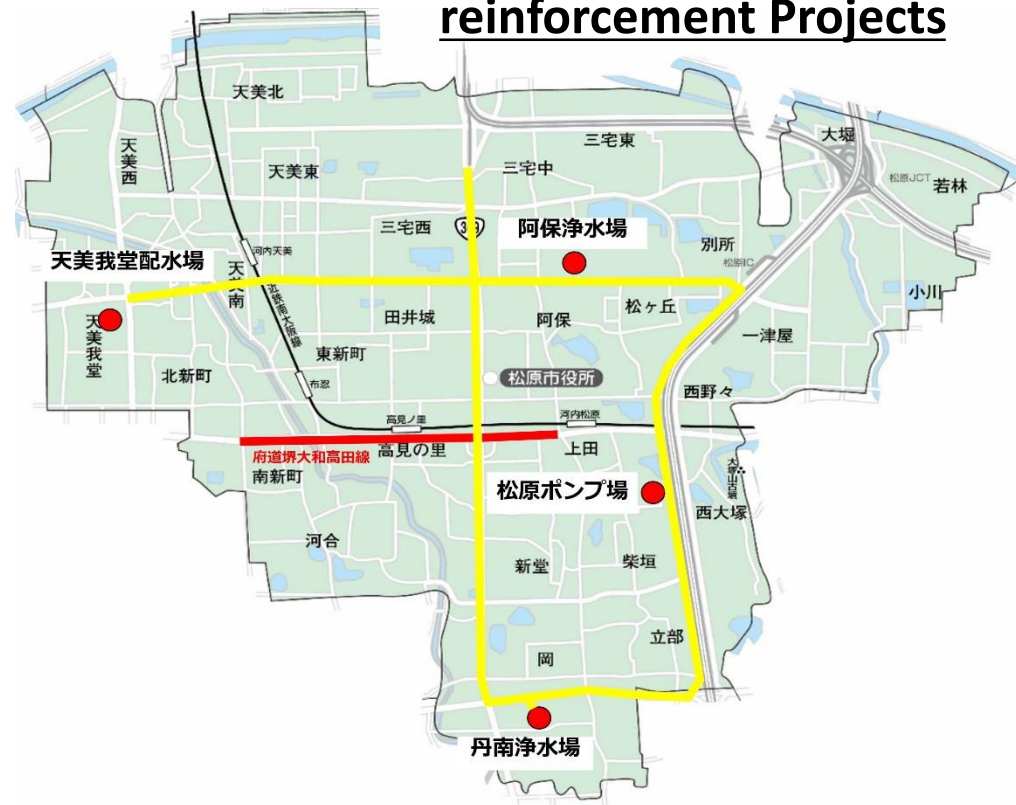
- Working with the Matsubara Disaster Preparedness Specialist Association, community-led shelter management has been promoted at all 22 designated school shelters.
- In FY2023, a Collaborative Shelter Management Network was established.
- Participants include neighborhood associations, volunteer disaster preparedness groups, education committee, PTAs, and Matsubara Disaster Preparedness Specialist Association.



Improving Community Disaster Resilience through Local Collaboration!!



Upgrading Aging Pipelines & Implementing Seismic reinforcement Projects



耐震化済 (基幹管路)	
主要事業 (R5～)	
浄・配水場	

Seismic Reinforcement Rate of Critical Water Pipelines (FY2022, Minamikawachi Region)

	Seismic Reinforcement Rate (%)
Matsubara City	100.0
大阪広域水道企業団 (藤井寺)	33.8
富田林市	68.3
河内長野市	73.3
大阪広域水道企業団 (太子)	69.8
大阪広域水道企業団 (河南)	40.3
大阪広域水道企業団 (千早赤阪)	7.2
大阪広域水道企業団 (大阪狭山)	62.6

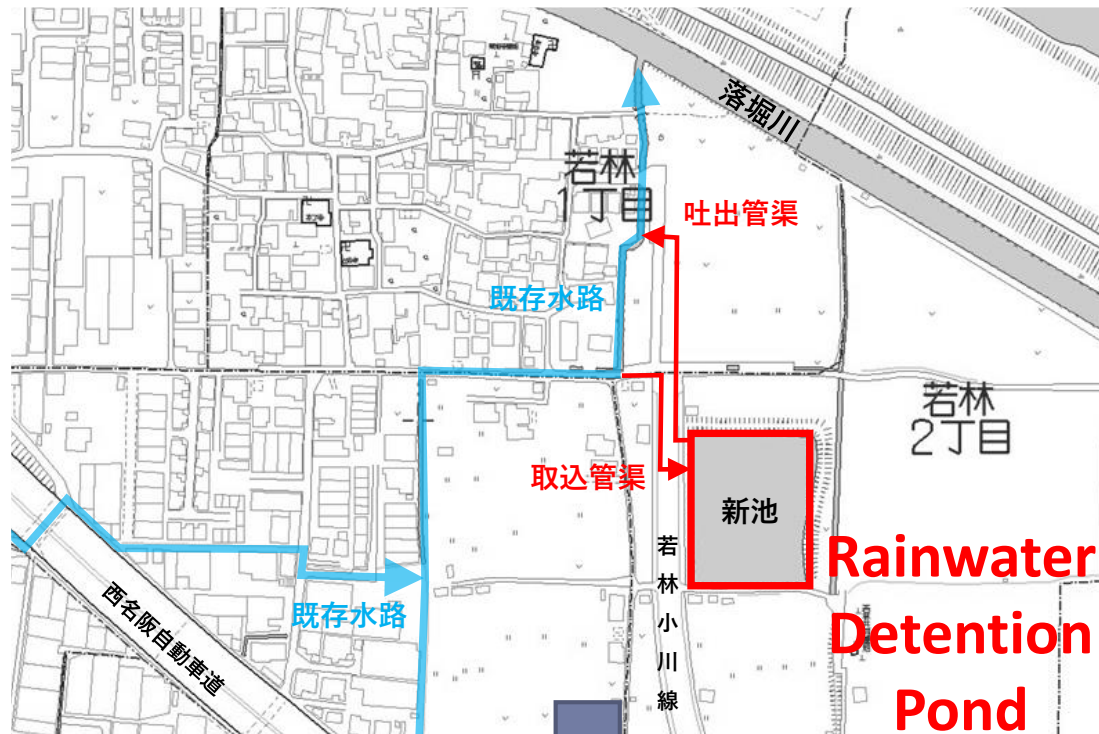
Osaka City	66.4
Sakai City	43.6
府総計	51.0

Critical Water Pipelines

These are essential water pipelines, including intake mains, transmission mains, and primary distribution mains (excluding service branches), which play a critical role in supporting the water supply system.



Construction of *Wakabayashi 2-Chome* Retention Pond



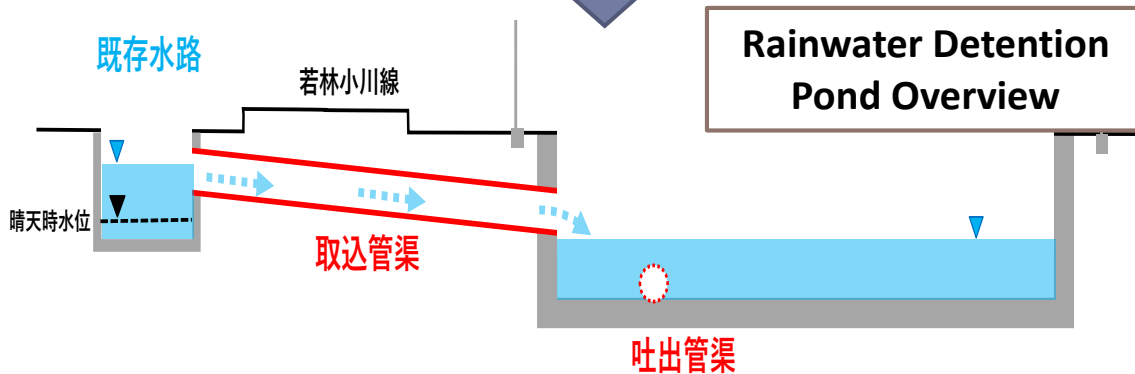
**Rainwater
Detention
Pond**



Rainwater Detention Pond



Rainwater Intake Structure





Construction of a New Emergency Supply Storage Center



(Tentative Name) Central Disaster Supply Storage Center Construction Project

- A new disaster supply storage center will be built on the former site of Matsubara Kindergarten.
- This facility will complement the city's two existing storage centers to expand emergency stockpiles.
- Scheduled to begin operation around December 2026.
- Location: *Ueda 5-chome*, east of Matsubara Junior High School.
- Facility Size: Approx. 1,000 m², two-story building.

Perspective Rendering





Challenges, Direction, and Initiative of the Taskforce Committee for Safety at Disaster



Challenge 1

Although concerns about natural disasters are high, individual preparedness remains insufficient.



Challenge 2

A large number of casualties are expected due to furniture tipping and related hazards.



Challenge 3

During a disaster, elderly and others requiring assistance are at high risk of injury or death due to delayed evacuation.



Direction1: Prevention of injuries and fatalities in earthquake disasters

Direction2: Protection of elderly and other vulnerable individuals from evacuation delays

Direction3: Prevention of injuries and fatalities due to flooding

Initiative1: Community-based disaster drills

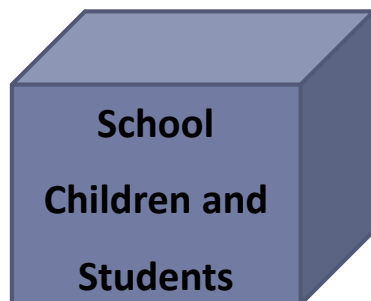
Initiative2: Promotion of earthquake preparedness measures

Initiative3: Promotion of flood risk reduction measures

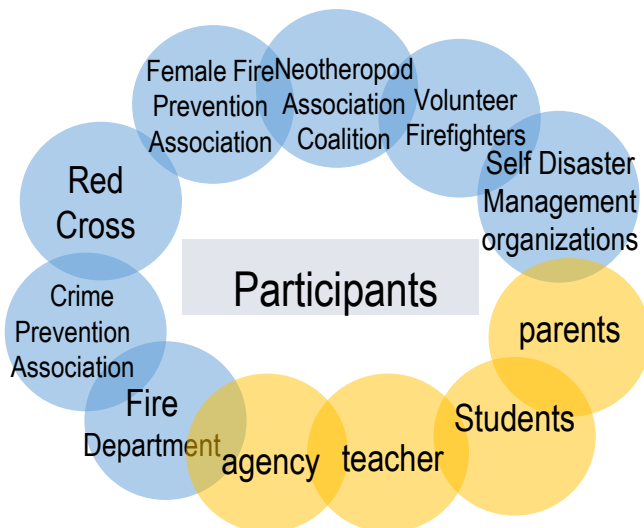
Aiming for Zero Delays and Zero Casualties During Disasters



Training by Regional Disaster Preparedness Network Council



☆ Collaboration with ISS ☆



Example of Training Activities



Water-based fire extinguishing drills, smoke simulation experience, caterpillar crawl drills.

By conducting the training during elementary school class visits, the program not only raises disaster awareness among children, but also:

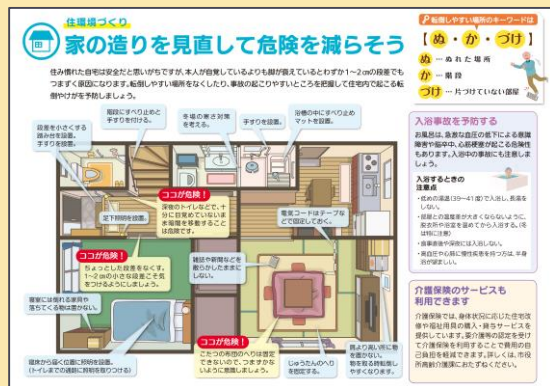
- **Encourages participation from parents with young children**
- **Promotes community interaction and engagement**



Collaboration with Other Taskforce Committee Taskforce Committee for Elderly Safety

Awareness Activities at the Matsubara Marche

Fall Prevention Pamphlets



**Promoting Furniture tipping Prevention
with Pamphlets distribution at Events**



Awareness Activities at the Local Festival



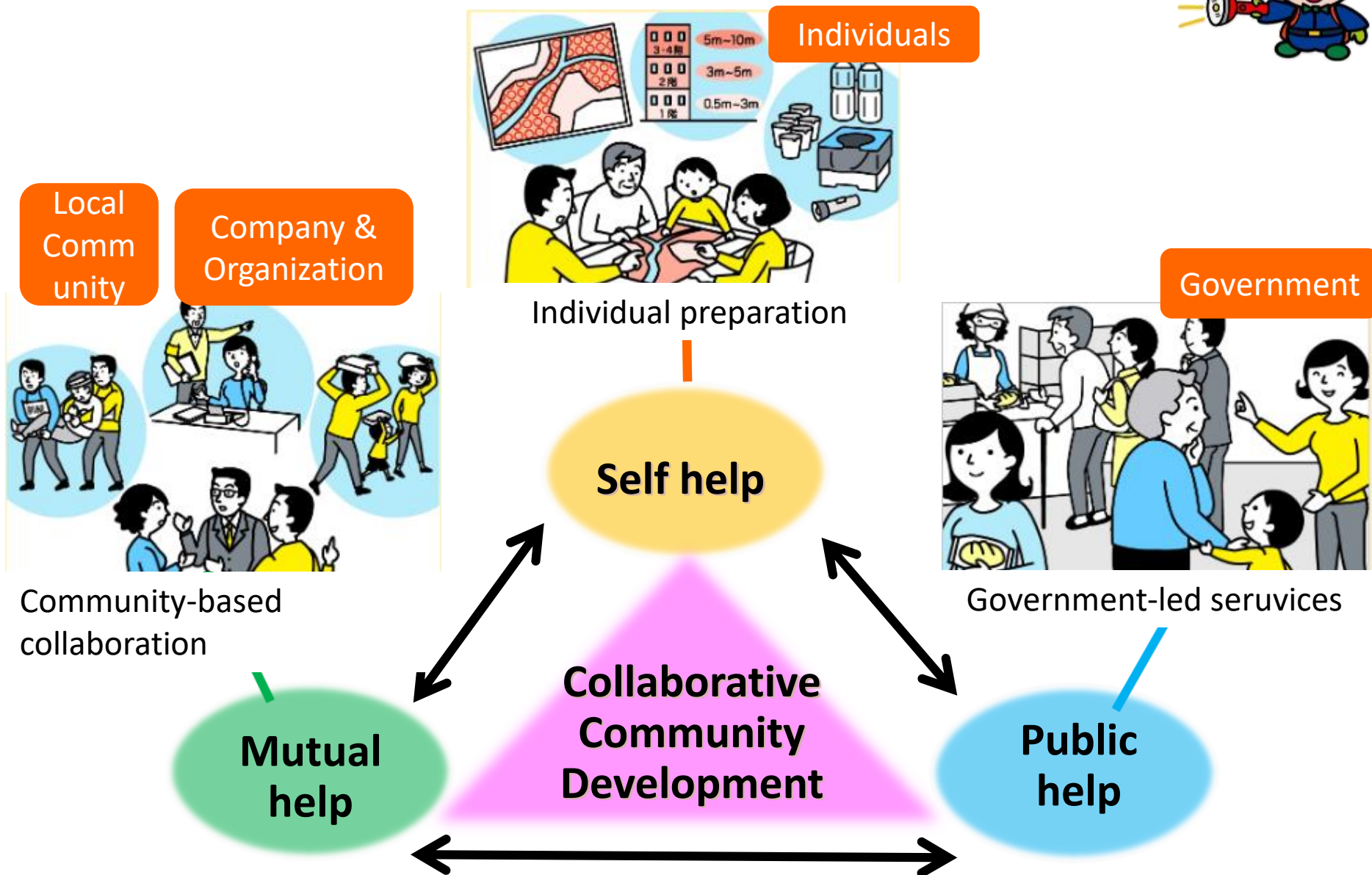
Disaster Preparedness Lessons at Elementary Schools in Flood hazard zone



Conducting a Survey



**Awareness Improvement at Events, through Surveys, and Outreach
Disaster Preparedness Lessons**





松原市セーフコミュニティ

First in Osaka !
Internationally Designated Safe
Community



International Safe Community Matsubara

～Safe Community: Building a Safe and Secure City through Collaboration～